

**“ A web of complex relations binds all of the living things in any region. Adding or subtracting even a single species causes waves of change that race through the web”**

***Charles Darwin***

















# What to Consider when Evaluating the Problem

- **Potential for Ecosystem Services**
- **Property Ownership above right of way**
- **Potential Fish Use (Passage)**
- **Summer Temperature Profile**



# **Ecosystem Services Provided by Beaver Ponds**

- 1) Juvenile Salmonid / Lamprey rearing habitat
- 2) Nutrient retention / cycling
- 3) Primary productivity
- 4) Floodplain connectivity
- 5) Flow moderation and dispersal
- 6) Channel restoration
- 7) Waterfowl and amphibian habitat



# **What to Consider when Evaluating the Problem**

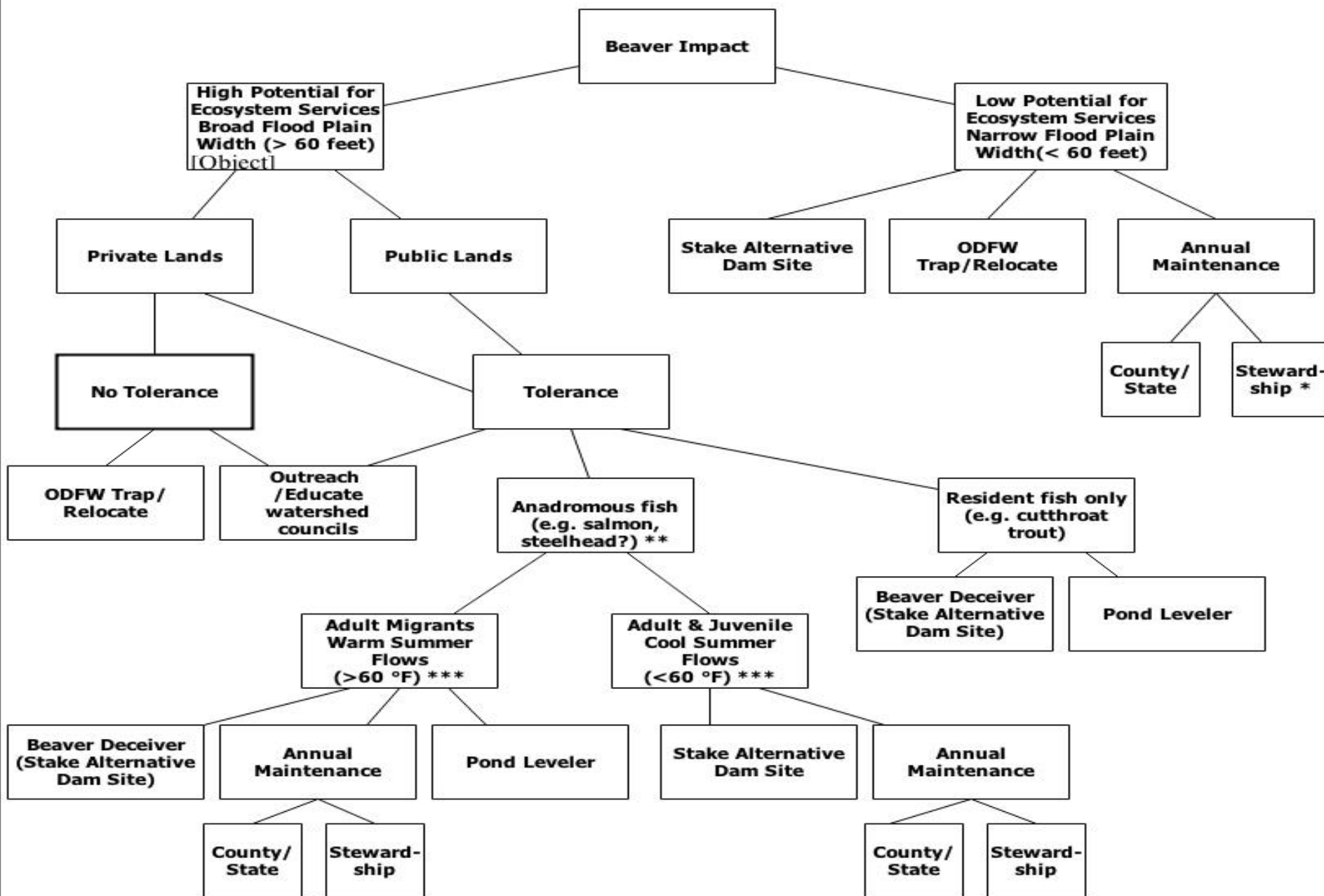
- **Potential for Ecosystem Services**
- **Property Ownership above right of way**
- **Potential Fish Use (Passage)**
- **Summer Temperature Profile**



# BEAVER MITIGATION DECISION FLOW CHART

© Steve Trask , Biosurveys LLC

December 2013



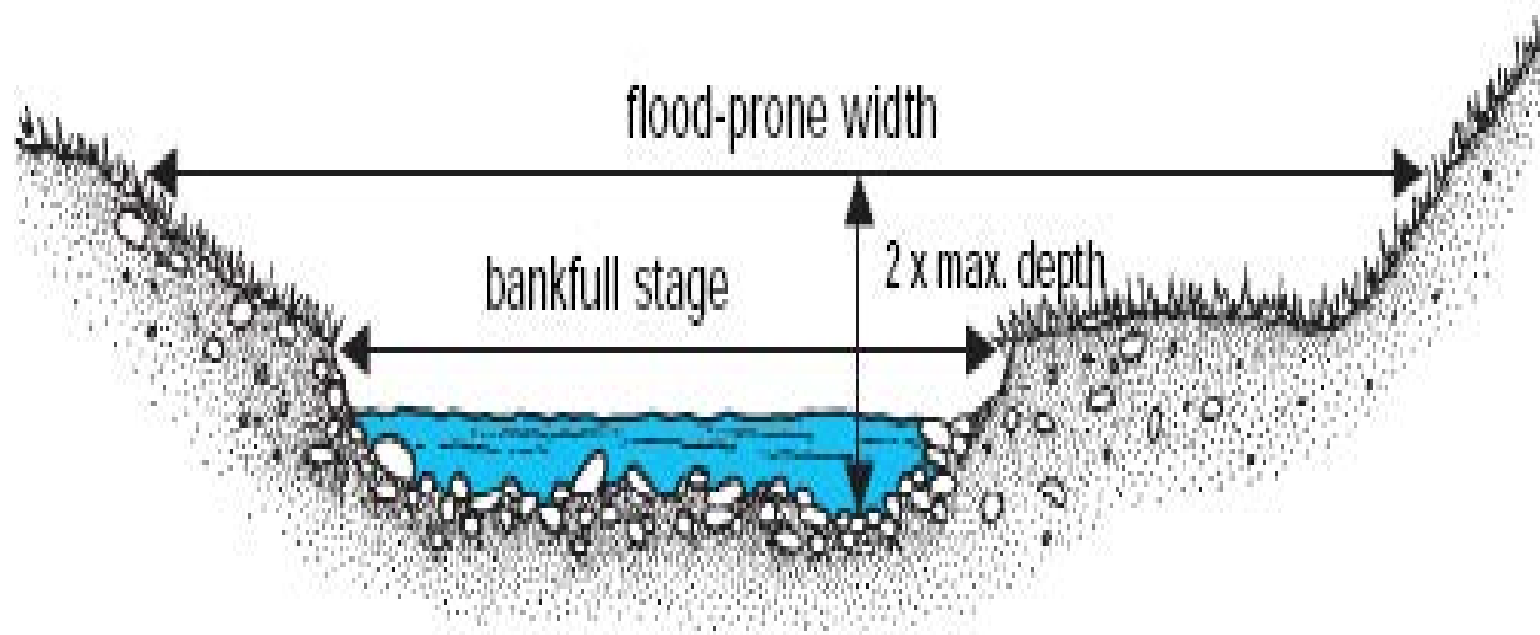








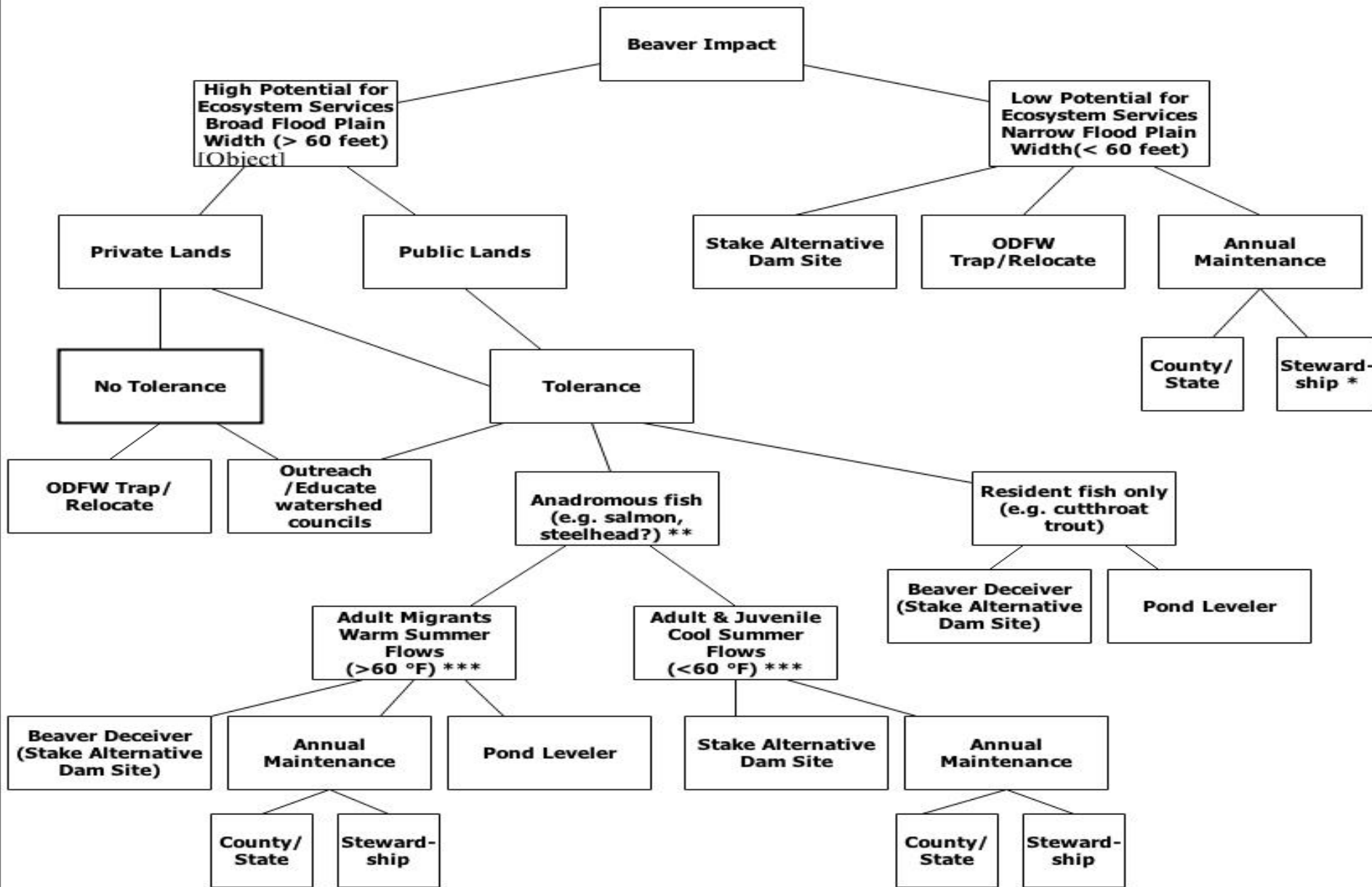




# BEAVER MITIGATION DECISION FLOW CHART

© Steve Trask , Biosurveys LLC

December 2013











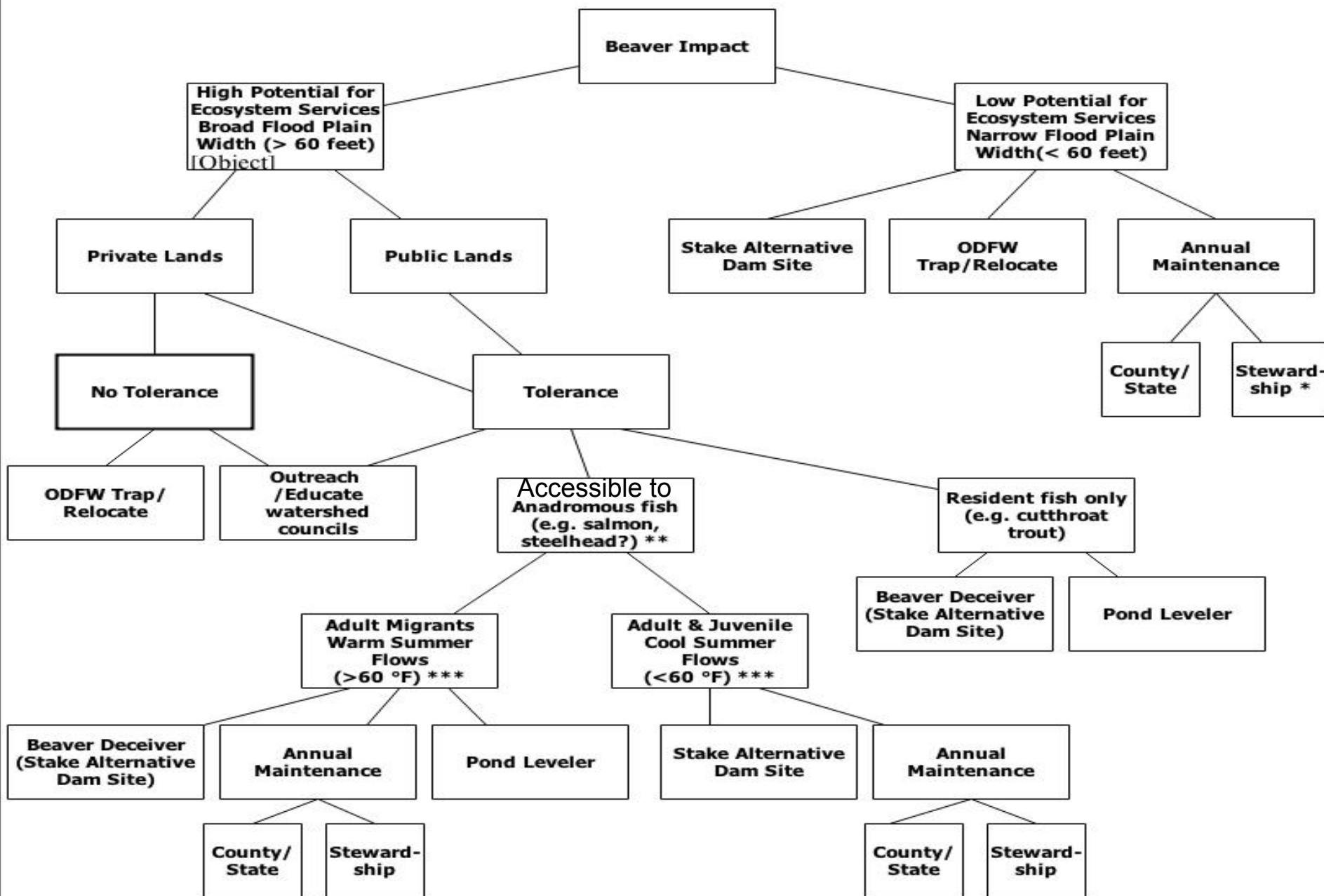




# BEAVER MITIGATION DECISION FLOW CHART

© Steve Trask , Biosurveys LLC

December 2013









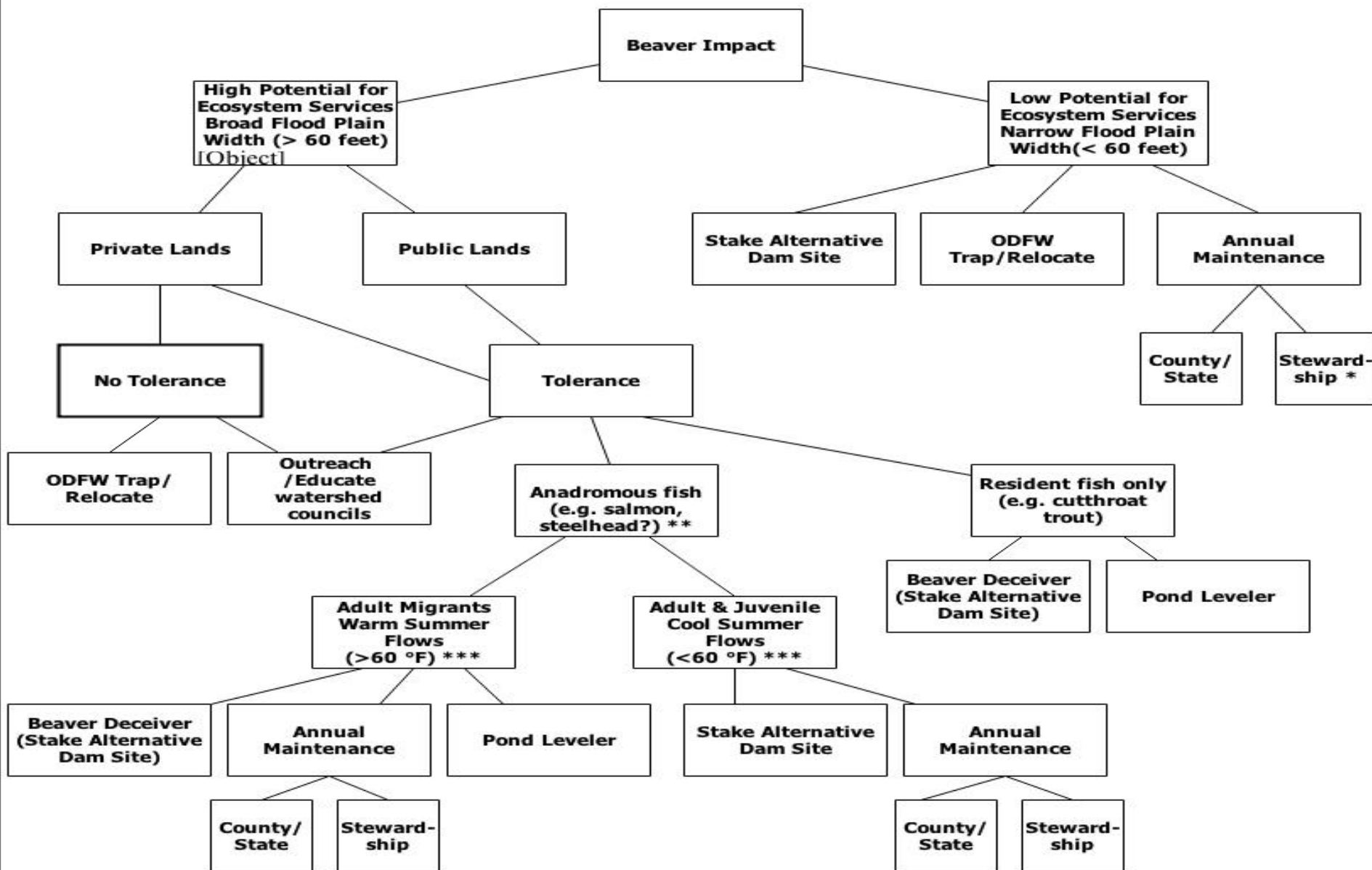




# BEAVER MITIGATION DECISION FLOW CHART

© Steve Trask , Biosurveys LLC

December 2013













# **Conflict**

Existing Beaver dam flooding infrastructure  
or property upstream

## **Potential Solution**

Employ a pond leveler

(stream reach not accessible to anadromous juveniles)

















11/15/2012 12:34



























# **Conflict**

Continuous attempts to block a culvert

## **Potential Solution**

Stake alternate dam site

(appropriate for any stream reach, anywhere)









11/15/2012 10:33





11/15/2012 12:30





11/15/2012 09:10















